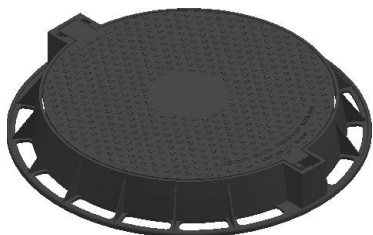
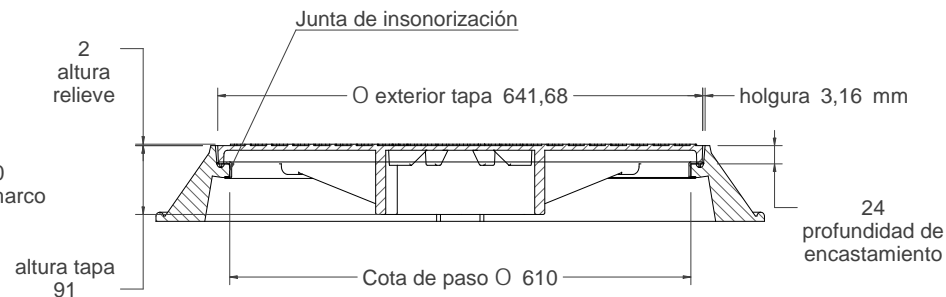


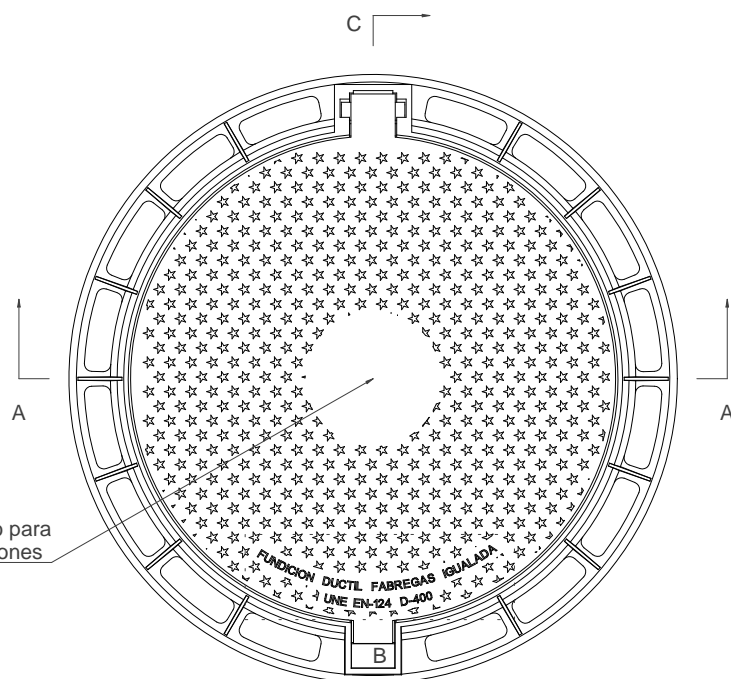
R-1
Tapa y Marco Abatible Mod. R-1



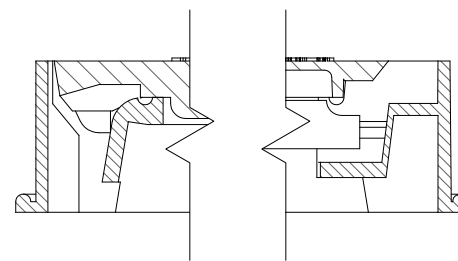
vista alzado
1:10



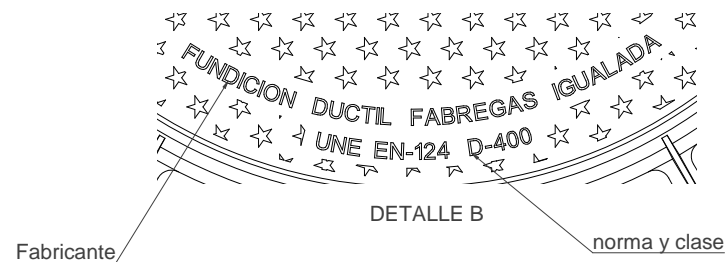
CORTE A-A



vista en planta
1:10



CORTE C-C
1:5



Material: Fundicion ductil GGG-40
Peso: 56.880 kg
Acabado: Pintado negro asfáltico
Norma: UNE EN-124
Clase: D-400

